

Cecelia Reinert Listing # 552

For Sale
700 Hadley Street
 Downs KS 67437

Call Cecelia at 785-454-1088



\$150,000.00

Beds: 3.00

Baths: 2.00

Size: 1400 Sq. Ft.

Year Built: 1961

Stories: 1

Garage: 2 Car Detached

Front

Property Details

Beautifully well maintained family home in Downs!

Price:	\$150,000.00
Beds:	3.00
Baths:	2.00
Property Size:	1400 Sq. Ft.
Lot Size:	75' x 150'
Year Built:	1961
Style:	
Stories:	1
garage:	2 Car Detached
Interior:	
Exterior:	Brick
Roofing:	Shingles

Indoor Ammenities

- Finished Basement
- Tile Floors
- Fireplace

Outdoor Ammenities

- Patio

Heating Cooling

- Central Heat
- Central Air

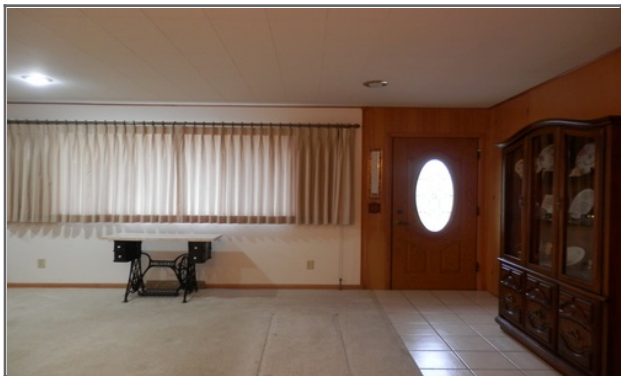
Lot Features

- Corner Lot

Description

Built in 1961, this one owner, brick exterior ranch house is in pristine condition, having been expertly maintained. One enters into an open plan living area comprised of the living room, dining area and kitchen. The living room is very large with a fireplace at one end. Both the kitchen and dining room are also sizable with good storage and tile floors. Three large bedrooms, the main bathroom and a utility room complete the main floor. The basement has the requisite mechanical room which also has ample room for storage. The finished portion of the basement has a very large living area currently separated into family room, workout room and office space. A fourth (non-standard) bedroom has one wall of built-ins, composed of closet, drawers and desk. The basement also houses the second bathroom with walk-in shower. A separate two car garage (32' x 24') is extra deep and extra wide so there is space for a shop area. Between the garage and the house is a concrete patio area, fenced to the front of the house and covered at the back, so it provides protection from the elements when entering the house through the back door. Extra features are a radon mitigation system, an in-ground irrigation system, garden shed, alley access, and a large backyard with mature trees and room for a vegetable garden. Located on two lots, this is an ideal family home, near to school, tennis and pickle ball courts, ballfield and parks.

Images



Entry



Living Room



Dining Room



Kitchen



Bedroom



Bedroom



Bedroom



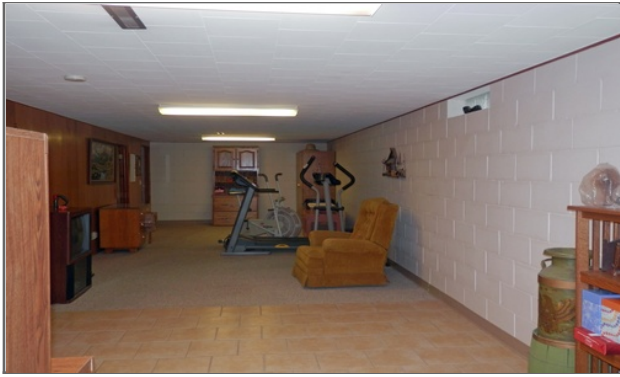
Bathroom



Laundry Room



Basement



Basement



Basement Bathroom



Garage



Back